

FLUTE 1

# MR. BOJANGLES

TERRY JEFF WALKER  
ARR. HENRI GERRITS

MED JAZZ WALTZ  $\text{♩} = 132$

Musical staff with treble clef and 3/4 time signature. Measure numbers are indicated above the staff: 4, 5, 8, 13, 21, 29, 41, and 8. The staff contains several rests and bar lines.

Musical staff starting at measure 49. It contains a sequence of quarter notes with stems pointing up, some of which are beamed together and have a slur above them.

Musical staff starting at measure 57. It contains a sequence of quarter notes with stems pointing up, some beamed together and slurred.

Musical staff starting at measure 64. It features a sixteenth-note run starting at measure 64, followed by quarter notes with stems pointing up. Measure 69 is marked above the staff.

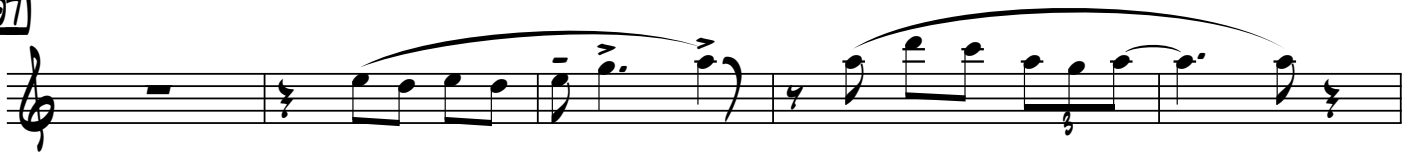
Musical staff starting at measure 77. It contains a sequence of quarter notes with stems pointing up, some beamed together and slurred.

Musical staff starting at measure 85. It contains a sequence of quarter notes with stems pointing up, some beamed together and slurred.

Musical staff starting at measure 91. It features a sixteenth-note run starting at measure 91, followed by quarter notes with stems pointing up. The staff ends with a fermata.

MISS CELIES BLUES

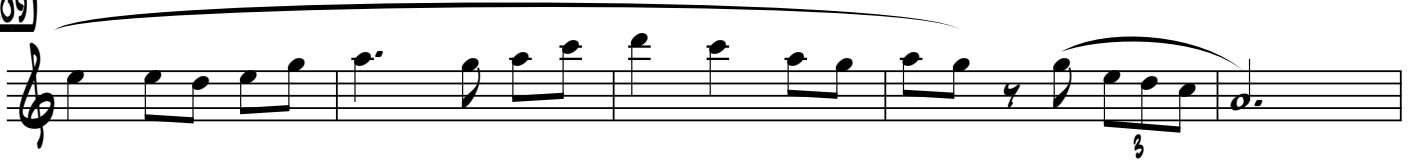
97



102



109



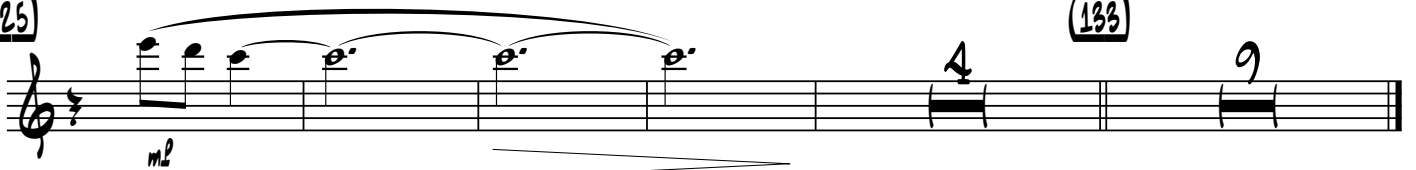
114



119



125



133

FLUTE 2

# MR. BOJANGLES

TERRY JEFF WALKER  
ARR. HENRI GERRITS

MED JAZZ WALTZ  $\text{♩} = 132$

Musical staff with treble clef and 3/4 time signature. Above the staff are measure numbers: 4, 5, 8, 13, 21, 29, 41, and 8. The staff contains rhythmic notation with stems and beams.

(49)

Musical staff with treble clef. Measure number 49 is circled. The staff contains a sequence of quarter notes with stems, some grouped by a slur.

(57)

Musical staff with treble clef. Measure number 57 is circled. The staff contains a sequence of quarter notes with stems, some grouped by a slur.

64

Musical staff with treble clef. Measure number 69 is circled. The staff contains a sequence of quarter notes with stems, some grouped by a slur. A double bar line is present at the end of the staff.

(77)

Musical staff with treble clef. Measure number 77 is circled. The staff contains a sequence of quarter notes with stems, some grouped by a slur.

(85)

Musical staff with treble clef. Measure number 85 is circled. The staff contains a sequence of quarter notes with stems, some grouped by a slur.

91

Musical staff with treble clef. Measure number 91 is circled. The staff contains a sequence of quarter notes with stems, some grouped by a slur. A double bar line is present at the end of the staff.

